

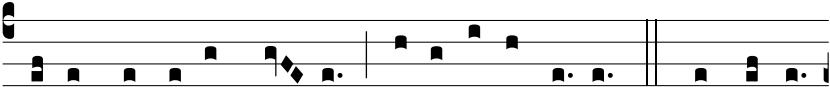
K



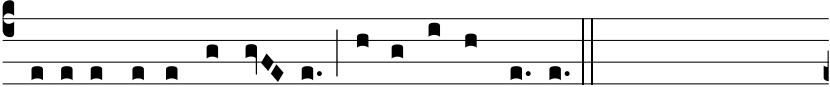
y-ri- e e-lé- i-son. *ij* Christe e-lé- i-son. *ij* Ký-ri- e



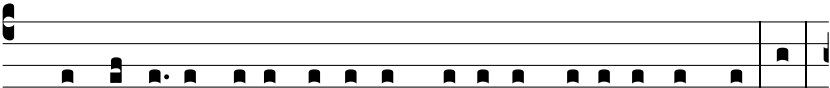
e-lé- i-son. *ij* Christe audi nos. *ij* Christe exáudi nos. *ij*



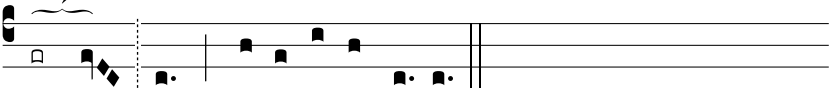
Pa-ter de cæ-lis De- us, mi-se-ré-re no-bis. 1. Cor Je-su,



Fí-li- i Patris æ-tér-ni, mi-se-ré-re no-bis.



2. Cor Je-su, in sinu Vírgi-nis Mátris a Spí-ri-tu Sancto *for-*



má- tum, mi-se-ré-re no-bis.