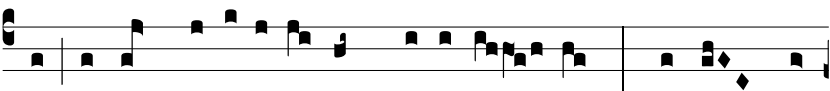
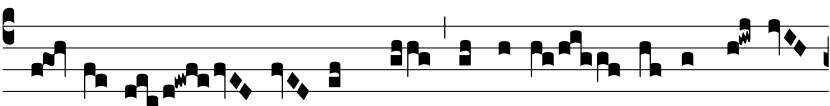


Resp.
8.**M**

a-rí- a * Magda-lé-ne, et ál- te-ra Ma-rí-



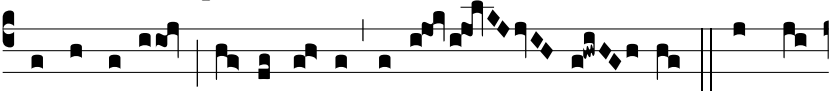
a i-bant di-lúcu-lo ad monumén- tum: † Je-sum quem



quæ-ri-tis, non est hic, surré-xit si-cut lo-cú-



tus est, præcédet vos in Ga-li-læ- am, i-bi e-um



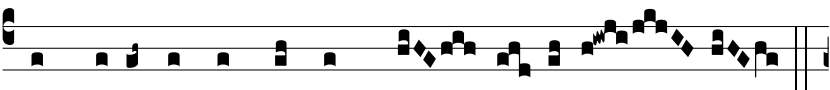
vi-dé-bi-tis, al-le-lú- ja, alle- lú- ja. √. Et val-



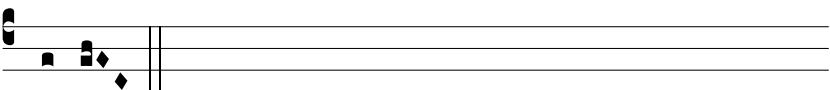
de mane una sabba-tó-rum vé-ni-unt ad monumén-



tum, or-to jam so- le: et intro-ë-úntes vi-dé-runt júve-



nem sedéntem in dextris, qui di- xit il- lis.



† Je-sum.