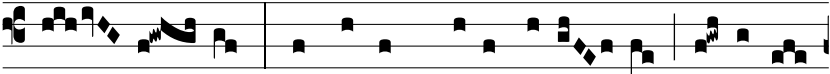


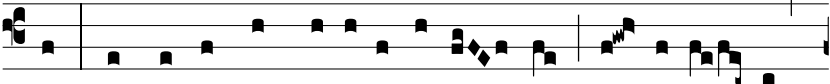
Resp.
2.
C



án- di-di facti sunt * Na-zaræ- i e- jus, al-le-



lú- ja: splendó-rem De-o dedé- runt, al-le-lú-



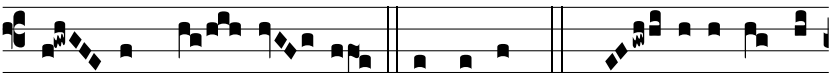
ja: † Et si-cut lac co- agu-lá-ti sunt, al- le-lú- ja,



alle- lú- ja. ♯. Candi-di- ó- res ni-ve, ni-ti-di-



ó-res la- cte, ru-bi-cundi- ó-res ébo-re antíquo, sapphí-



ro pulchri- ó- res. † Et si-cut. ♯. Gló- ri- a Pa-tri,



et Fí-li- o, et Spi-rí- tu- i San- cto. † Et si-cut.