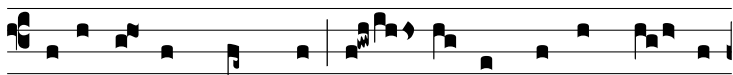


Resp.

2.

**L**



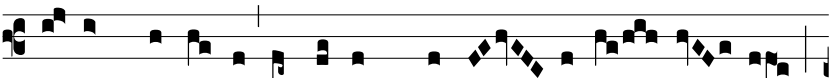
locú-tus est\* ad me u- nus ex septem An-ge-



lis, di- cens: Ve- ni, o-sténdam ti-bi novam nu-



ptam, spon- sam A- gni : † Et vi- di Je-rú-sa-lem descen-



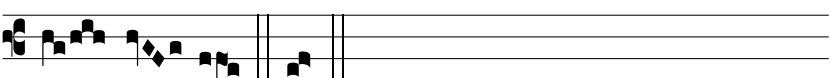
déntem de coe-lo, orná-tam mo-ní- li-bus su- is,



al-le-lú-ia, alle-lú-ia, al-le- lu- ia.



‡ Et sústu-lit me in spí-ri- tu in montem ma- gnum



et al- tum. † Et.