

R. br.

6.

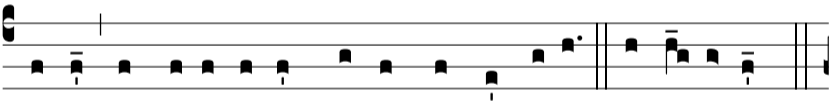
**A**



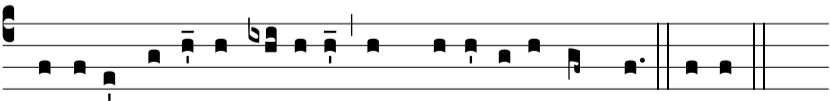
-ve Ma-rí-a, grá-ti-a plena, Dóminus te-cum, \*



Al-le-lú-ia, alle-lú-ia. Ave  $\Psi$ . Bene-dícta tu in mu-li-é-



ri-bus, et bene-díctus fructus ventris tu-i. \* Al-le-lú-ia,  $\Psi$ .



Gló-ri-a Patri, et Fí-li-o, et Spi-rí-tu-i Sancto. Ave