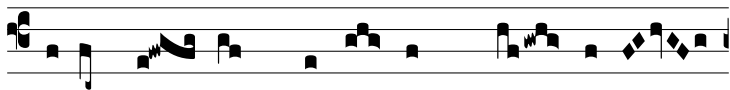


Resp.

2.

P



Onit nu- bem * ascén- sum su um Dómi-



nus: † Qui ámbu- lat super pen- nas ven- tó-



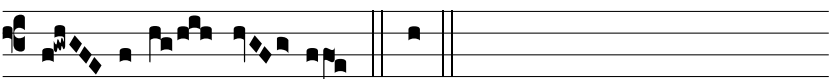
rum, al-le- lú- ja. † Confessi- ó- nem et de- có-rem



indu- í- sti, amíctus lumen si- cut ve- sti- mén-



tum. † Qui. † Gló- ri- a Pa- tri. et Fí- li- o, et Spi-



rí- tu- i San- cto. † Qui.