

## Tract.

2.

T



U es

\* Pe- trus,

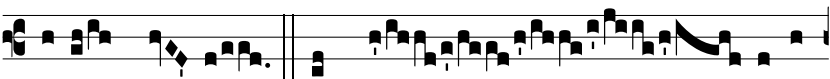
et



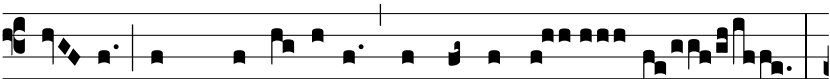
su- per hanc pe- tram

aedi- fi- cá- bo

Ecclé-

si- am me- am.  $\Psi$ . Et por-

tae ín-



fe- ri non praeva- lébunt advérsus e-

am :



et ti- bi da- bo

claves regni cae- ló- rum.  $\Psi$ . Quod-

cúm-

que li- gáve- ris super ter- ram,



e- rit li- gá-

tum

et in cae-

lis.  $\Psi$ . Et

quodcúmque

sólvé- ris su-



per ter-

ram,

e- rit so- lú-

tum



\* et in cae-

lis.