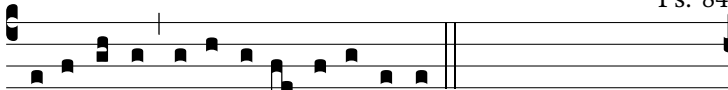
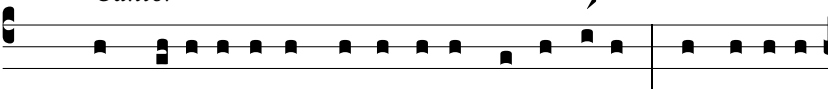


4 E.

Cantor

A

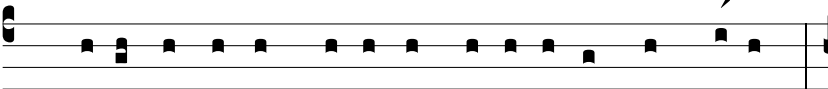
l-le-lú-ia, alle-lú-ia, alle-lú-ia.

Cantor

Ψ. 1 *Compla-ísti* ti-bi, Dómi-ne, in *terra tu-a* * convertísti



capti-vi-tá-tem Ia-cob.

Cantor

Ψ. 2 *Osténde* no-bis, Dómi-ne, mi-se-ri-cór *diam tu-am*, *



et sa-lu-tá-re *tu-um da no-bis.*