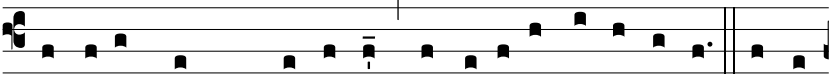


A



-mó-ris sensus é-ri-ge ad te, largí-tor vé-ni-æ,



ut fi-as clemens córdi-bus purgá-tis inde sórdi-bus. Extér-



ni huc advé-nimus et éxsu-les ingémimus; tu portus es et



pátri-a, ad vi-tæ duc nos átri-a. Fe-lix quæ si-tit cá-ri-tas



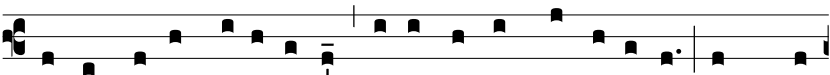
te fontem vitæ o Vé-ri-tas; be-á-ti valde ócu-li te spe-cu-



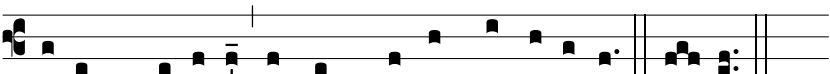
lántis pópu-li. Grandis est ti-bi gló-ri-a tu-æ laudis memó-



ri-a, quam si-ne fi-ne cé-lebrant qui cor ab imis é-levant.



Præsta, Pa-ter pi-íssime, Patrique compar Uni-ce, cum Spí-



ri-tu Pa-rácli-to regnans per omne sæcu-lum. A-men.