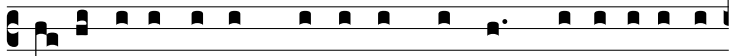
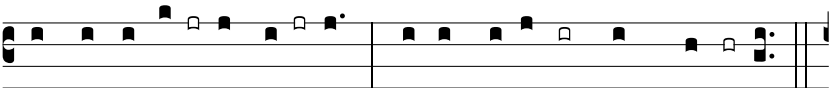


7 d.

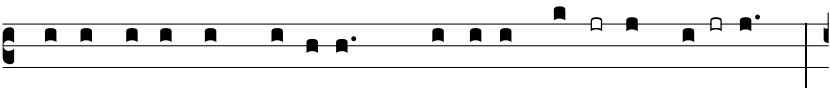


A

t-tól-li-te portas, prínci-pes, vestras, † et e-levámi-



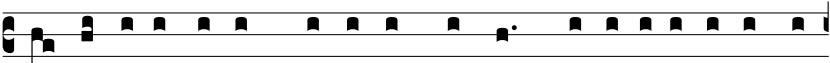
ni, portæ æ-terná-les: \* et intro-í-bit Rex gló-ri-æ.



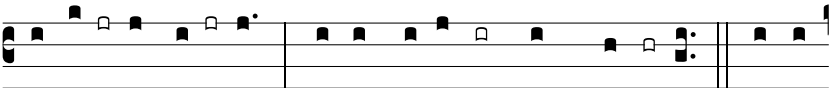
Quis est iste Rex gló-ri-æ? † Dóminus fortis et po-tens: \*



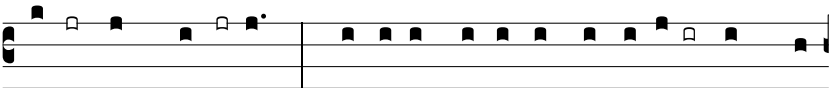
Dóminus po-tens in præ-li-o.



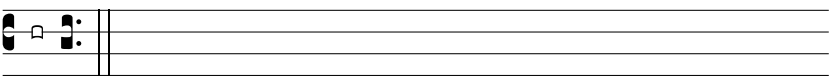
At-tól-li-te portas, prínci-pes, vestras, † et e-levámi-ni, por-



tæ æ-terná-les: \* et intro-í-bit Rex gló-ri-æ. Quis est



iste Rex gló-ri-æ? \* Dóminus virtú-tum ipse est Rex gló-



ri-æ.