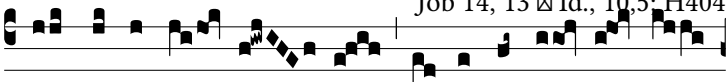
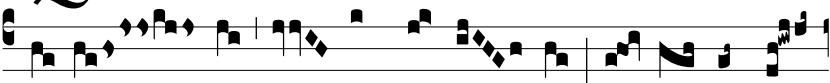


Resp.

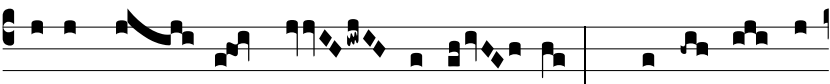
8.



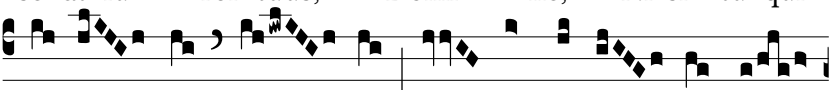
Q Uis mi-hi trí- bu- at ut in infér-no pró-



te-gas me et abscondas me, do- nec pertrán-



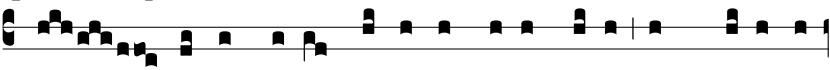
se- at fu- ror tuus, Dómi- ne, * Ni-si tu qui



so- lus es, De- us? et constí- tu- as tem-



pus in quo re-córde- ris me- i? † Num-



quid si- cut di- es hómi- nis di- es tu- i, ut quæras i-



niqui- tá-tem me- um, cum sit nemo qui de manu tu- a



possit e- rú- e- re. * Ni-si tu.