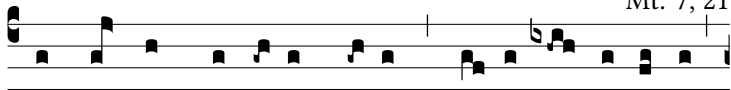
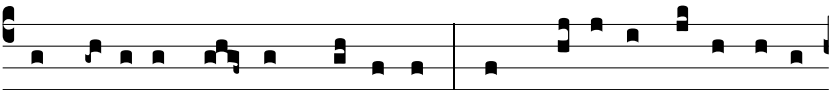


Ant.  
8 g.**N**

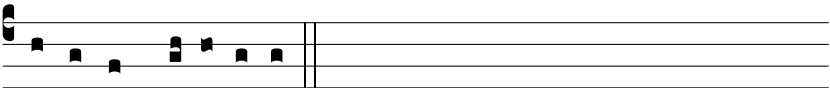
ON omnis qui di-cit mi-hi: \* Dómi-ne, Dómi-ne,



in-trá-bit in re-gnum cæ-ló-rum; sed qui fa-cit vo-luntá-tem



Patris me-i qui in cæ-lis est, ipse in-trá-bit in regnum



cæ-ló-rum, alle-lú-ia.