

Comm.

1.

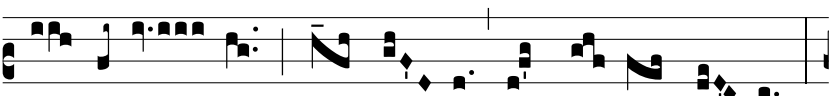
P



Asser * invé-nit si-bi domum, et turtur ni-dum,



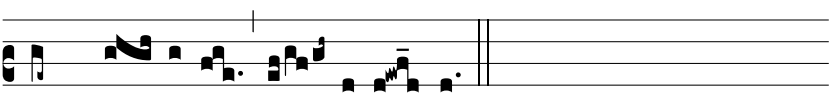
u-bi repó- nat pul-los su- os : altá- ri- a tu- a Dómi-



ne virtú- tum, Rex me- us, et De- us me- us :



be- á-ti qui há-bi-tant in domo tu- a, in saé- cu-



lum saé- cu-li lau- dábunt te.