

## Tract.

2.

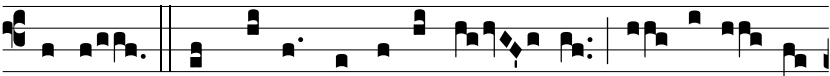
A



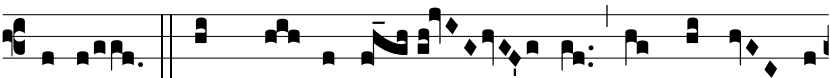
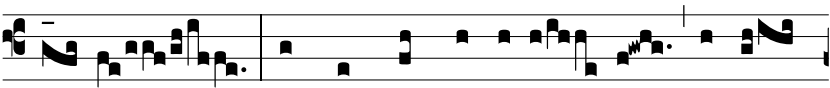
-pud Dó- mi- num \* gres- sus hómi- nis



di- ri- gén- tur : et vi- am e- jus

vo- let.  $\Psi$ . Os justi me- di- tá- bi- tur sa- pi- én- ti-

am, et lingua e- jus loqué- tur ju- dí-

ci- um.  $\Psi$ . Lex De- i e- jus in corde i-

psí- us, et non supplantabún- tur gressus



\* e- jus.