


8 c.

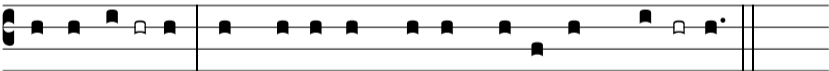
A



l-le-lú-ia, alle-lú-ia, al-le-lú-ia.



Ψ 1. *Ex-altábo* te, De-us **me**-us, rex: † et bene-dí-cam nó-



mi-ni **tu**- o * in *sáecu-lum*, et in *sáecu-lum* *sáecu*-li.

2 *Per síngulos* dies benedícam **tibi**:† et laudábo nomen tuum in *sáeculum*, et in *sáeculum* *sáeculi*.