

Intr.  
3.

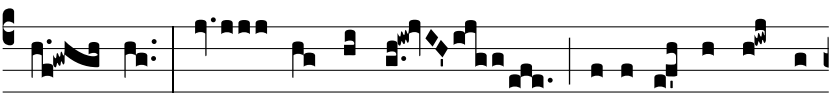


**D**

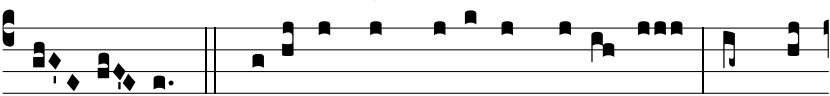
Ispér- sit, \* de- dit paupé- ri- bus: ju-



stí- ti- a e- jus ma- net in saé- cu- lum saé-



cu- li: cor- nu e- jus exaltá- bi- tur in



gló- ri- a. *Ps.* Be- á- tus vir qui timet Dómi- num: \* in man-



dá- tis e- jus vo- let nimis. Gló- ri- a Patri E u o u a e