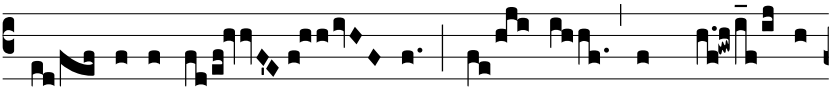


Grad.  
2.

D



Ispérsit, \* de- dit paupé- ri- bus: ju-



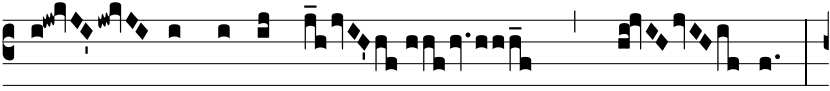
stí- ti- a e- jus ma- net in saé- cu-



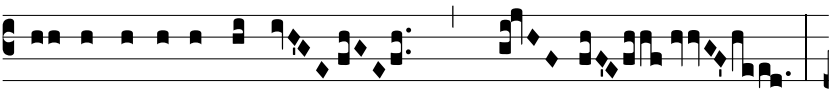
lum saé- cu- li:  $\Psi$ .



Pot-ens in ter- ra



e- rit semen e- jus:



ge- ne- rá- ti- o rectó- rum \*



be- ne- di- cé- tur.