

Resp.

7.  
S



ignum magnum appár-u- it in cæ- lo Mú-



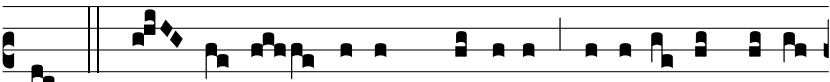
li- er amícta so- le, et lu- na sub pé- di-



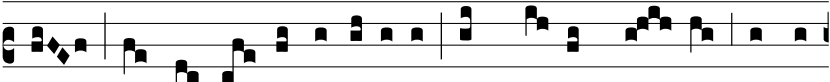
bus e- jus. \* Et in cá- pi- te e-



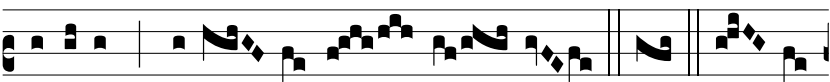
jus co-ró- na stellá- rum du- ó- de-



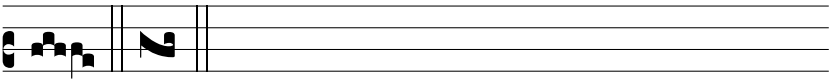
cim. √. In- du- it e- am Dóminus vestiméntis sa-lú-



tis, in-dumén-to justí-ti-æ, et qua-si Spon- sam orná-



vit e- am moní- li-bus su- is. \* Et. Gló- ri-



a \* Et.