

Resp.

2.
I

n co-lúmbæ spé- ci- e * Spí- ri- tus San-



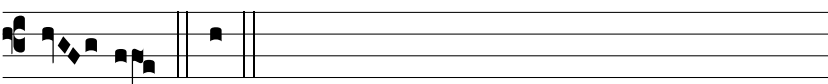
ctus vi-sus est, Pa-tér- na vox au-dí-ta est : †



Hic est Fí-li- us me- us di-lé- ctus, in quo mi-hi be-ne

complá-cu-i i- psum au- dí- te. *Ÿ* Cœ-

li apérti sunt super e- um, et vox Patris intó-



nu- it. † Hic.