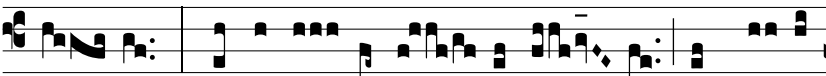


Intr.
2.

S



Alve * sancta Pa-rens, e-ní-xa pu-érpe-ra



Re-gem, qui cæ-lum terrám- que re- git in sæ-cu-



la sæ-cu- ló- rum. *T. P.* Al-le- lú- ia, alle- lú-



ia. *Ps.* E-ru-ctá-vit cor me-um verbum bonum : * di-co e-



go ópe-ra me- a re-gi. Gló-ri- a Patri. E u o u a e.