

Grad.

1.
T



O- ta * formó-sa et su-á-vis es, fí-li-a



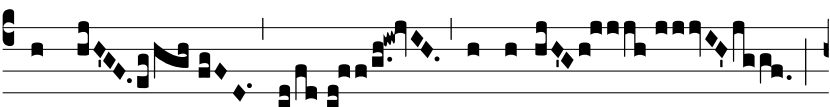
Si- on, pul- chra ut lu- na,



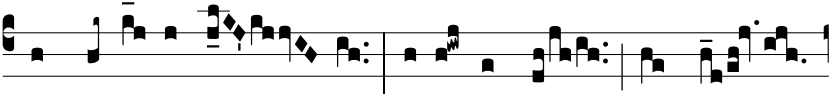
e- lé- cta ut sol, terrí-bi- lis ut castró-



rum á- ci- es ordi- ná- ta. Ψ . Bene- dí-



xit te Dóminus



in virtú- te su- a, qui- a per te ad ní-



hi- lum redé-



git * in- imí- cos no- stros.