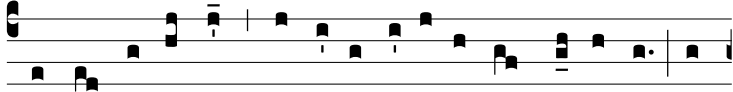
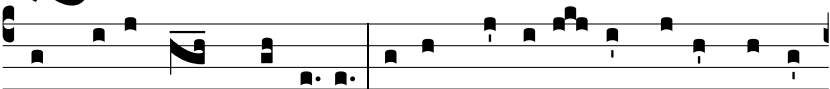


Ant.
3 a2.



Q

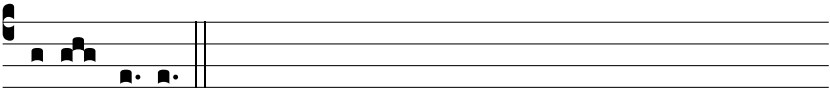
Uando na-tus es * in-ef-fa-bí-li-ter ex Vír-gi-ne, tunc



implé-tae sunt Scrip-túrae: sic-ut plú-vi-a in vellus descen-



dísti, ut sal-vum fá-ce-res ge-nus hu-má-num: te lau-dá-mus



De-us noster.