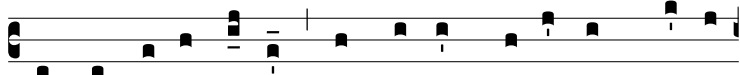
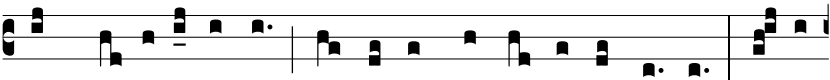


Ant.
7 a.



C

UM intrá-ret Je-sus * in domum cu-júsdam prínci-



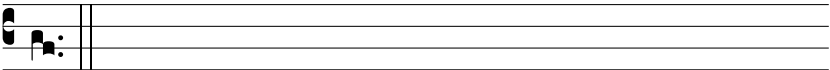
pis pha-risae-ó-rum sá-bba-to mandu-cá-re pa-nem: ecce



ho-mo qui-dam hydró-pi-cus e-rat ante illum: ipse ve-ro



appre-hén-sum sa-ná-vit e-um, ac dimí-sit. E u o u a



e.