

Ant.
8.



A

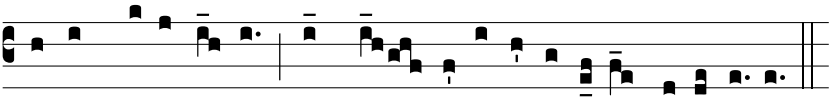
B O-ri-énte * vené-runt Ma-gi in Bétlehem ad-



o-rá-re Dóminum: et apértis thesáuris su-is, pre-ti-ó-sa



múne-ra obtu-lé-runt: aurum, sic-ut Re-gi magno: thus,



sic-ut De-o ve-ro: myrrham sepultúrae e-jus, alle-lú-ia.