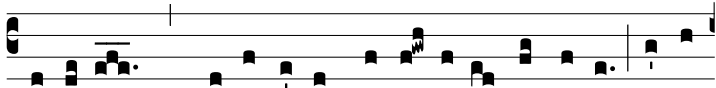


Ant.  
8.



**M**

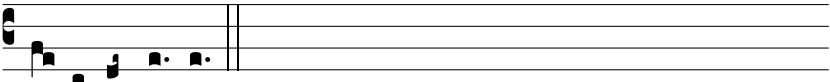
U-li-er, \* quae e-rat in ci-vi-tá-te peccátrix, áttu-



lit a-la-bástrum unguénti: et stans se-cus pedes Dómi-ni,



lá-crimis coepit ri-gá-re pedes e-jus, et ca-píl-lis cá-pi-tis



su- i tergé-bat.