

Intr.

1.

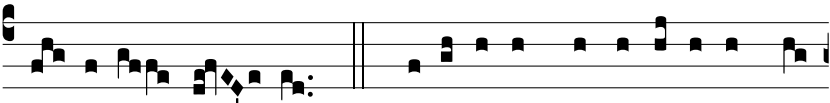
J



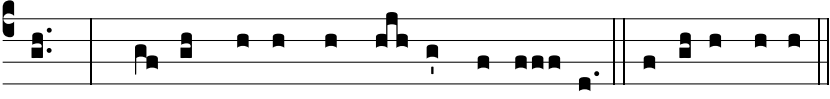
Ustus es * Dómi- ne, et rectum ju- dí- ci- um



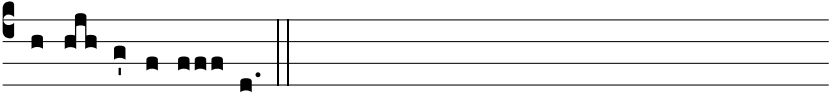
tu- um : fac cum ser- vo tu- o se- cúndum mi- se- ri-



cór- di- am tu- am. *Ps.* Be- á- ti imma- cu- lá- ti in vi-



a : * qui ámbu- lant in le- ge Dómi- ni. Gló- ri- a Patri.



E u o u a e.