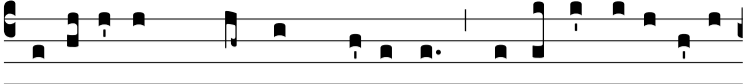


Ant.  
8 G.



S

Imi-le est \* regnum caeló-rum hómi-ni nego-ti-a-



tó-ri quaerénti bo-nas marga-rí-tas: invénta una pre-ti-



ó-sa, de-dit ómni-a su-a, et compa-rá- vit e- am. *T. P.*



Alle-lú-ia.