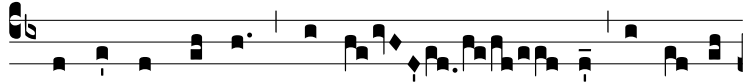


Ant.  
6.



**R**

E-gí-na cae-li \* lae-tá-re, al-le-lú-



ia: Qui- a quem me-ru-ísti por-



tá-re, al-le-lú-ia: Re-surré-xit, sic-ut di-xit, al-



le-lú-ia: O-ra pro no-bis De-um, alle- \*



\*\*

lú-ia.