

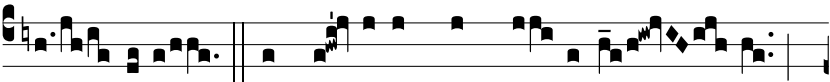
Tract.
8.



Ubi-lá- te * Dó-mino omnis terra :



serví- te Dómi-no in laeti-



ti-a. Ψ . Intrá- te in conspé-ctu e- jus,



in exsul- ta- ti- ó-ne. Ψ . Sci-tóte quod Dómi-



nus i- pse est De- us. Ψ . I-



pse fe- cit nos, et non i- psi nos :



nos autem pó- pulus e- jus, et oves



pá- scu- ae * ejus.