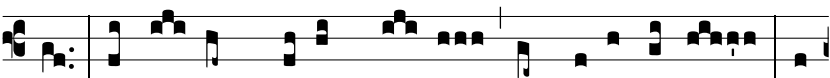


Intr.  
2.

R



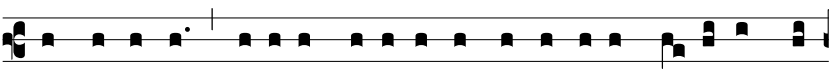
Ed-i-me me \* Dómi-ne, et mi-se-ré- re me-



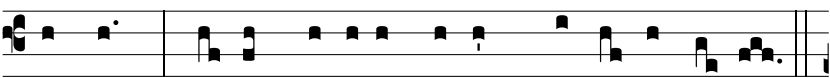
i: pes e- nim me- us ste- tit in vi- a recta: in



ecclé-si- is bene-dí-cam Dó- mi- num. *Ps.* Jú-di- ca



me Dómi-ne, quóni- am ego in inno-cénti- a me- a ingrés-



sus sum: \* et in Dómino spe-rans, non in-firmá-bor.



Gló-ri- a Patri. E u o u a e.