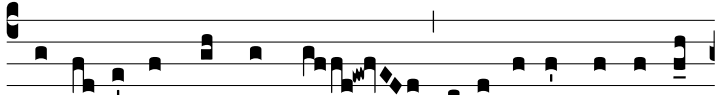
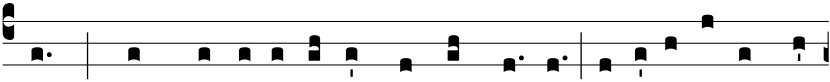


Ant.
8.



M

A-ni-féste magnum est * pi-e-tá-tis sacramén-



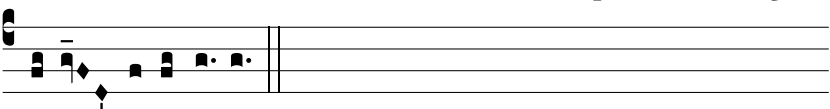
tum, quod ma-ni-festá-tum est in carne, justi-fi-cá-tum est



in spí-ri-tu, appá-ru-it Ange-lis, praedi-cá-tum est Gén-



ti-bus, cré-di-tum est in mundo, assúptum est in gló-



ri-a, alle-lú-ia.