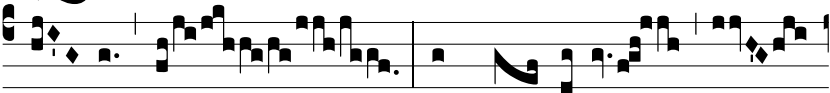


Tract.
8.



Q

UI confí- dunt * in Dó-mino, sic- ut mons



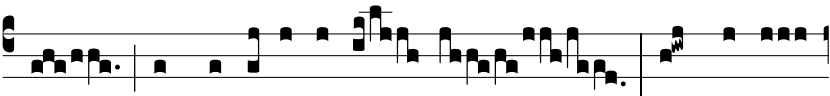
Si- on : non commové-



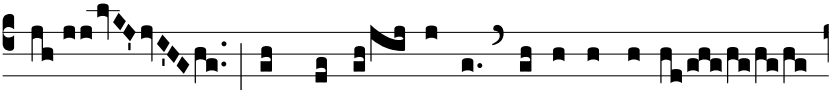
bi- tur in aetér- num, qui há-bi- tat



in Je-rú- sa- lem. Ψ . Mon-



tes in circú- i- tu e- jus : et Dómi-



nus in circú- i- tu pópu- li su- i,



ex hoc nunc et us- que * in saé- cu-



lum.