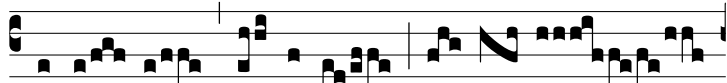


Tract.
8.

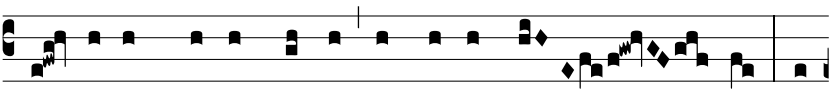
V



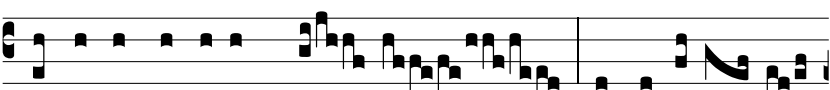
INE- A * fac-ta est di- léc- to



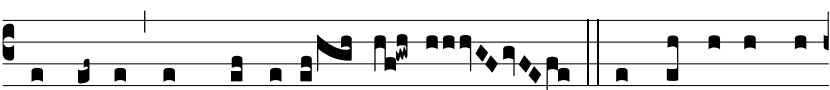
in cornu, in loco ú- be- ri. Ψ . Et ma-



cé- ri- am circúmde- dit, et circumfó- dit: et



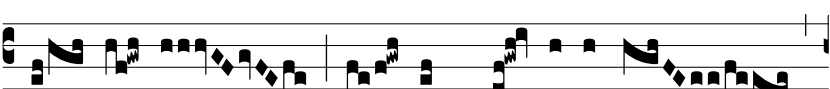
plantá- vit ví- ne- am So- rec, et aedi- fi- cá-



vit turrim in mé- di- o e- jus. Ψ . Et tórcu- lar fo-



dit in e- a: ví- ne- a e- nim Dómi- ni



Sá- ba- oth, do- mus * Is- ra- el est.

