

Intr.
3.

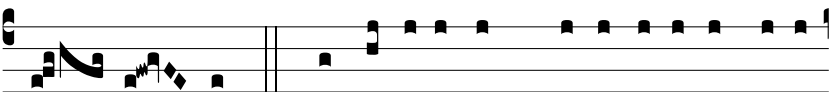


M

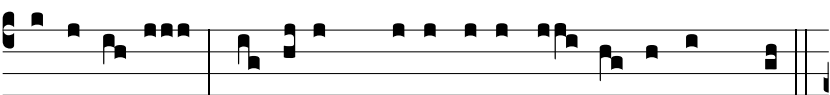
I-SERÉRE mi-hi * Dómi- ne, quóni- am con



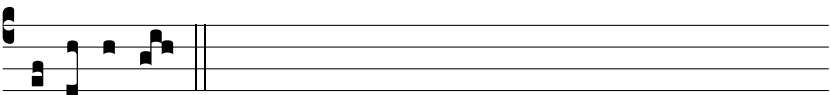
culcá- vit me ho- mo: to-ta di- e bel- lans tri-bu-lá-



vit me. *Ps.* Conculcavé-runt me i-nimí-ci me- i



to-ta di- e: * quóni- am multi bellántes advérsum me.



Mi-se-ré-re.