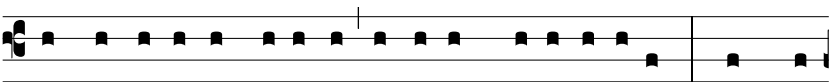


Resp.

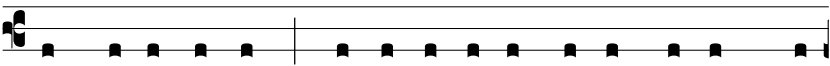
A



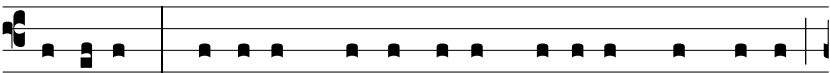
-mí-cus me-us \* óscu-li me trá-di-dit signo:



quem oscu-lá-tus fú-e-ro, ipse est, tené-te e-um: hoc ma-



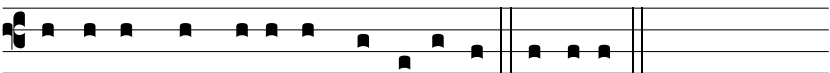
lum fe-sit signum, qui per óscu-lum ad-implé-vit homi-



cí-di-um. \* Infe-lix præ-termí-sit pré-ti-um sán-gui-nis,



et in fi-ne lá-que-o se suspéndit.  $\Psi$ . Bonum e-rat e-i,



si na-tus non fu-ísset homo il-le. \* Infe-lix.