

Resp.

6.

V



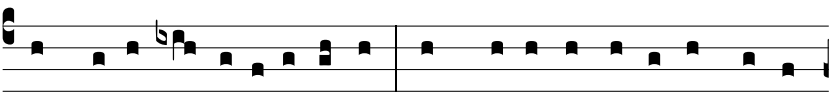
e-lum templi * scissum est, * Et omnis terra trému-



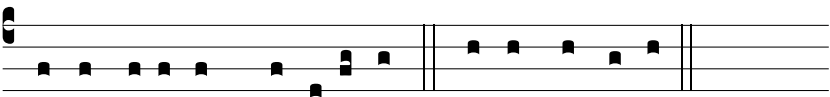
it: latro de cru-ce clamábat, di-cens; Meménto me- i, Dó-



mi-ne, dum véne-ris in regnum tu- um. Ψ . Petræ scissæ sunt,



et monu-ménta apérta sunt, et multa córpo-ra sanctó-rum,



qui dormí- e-rant, surrexé-runt. * Et omnis terra.