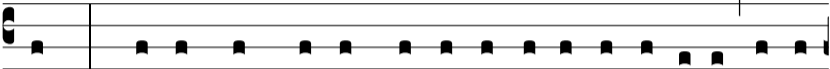


Resp.



Æ

- stimá-tus sum * cum descendéti-bus in la-



cum: * Factus sum si-cut homo si-ne adju-tó-ri-o, inter



mórtu-os li-ber. Ψ . Po-su-é-runt me in la-cu infe-ri-ó-ri,



in tenebró-sis, et in umbra mor-tis. * Factus.