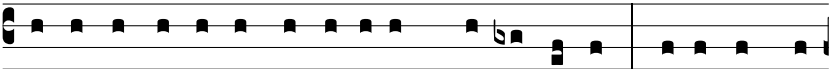


Resp.

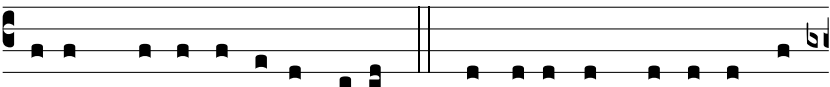
S



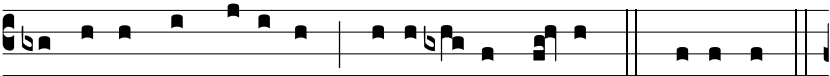
e-púl-to Dómino, * signá-tum est mo-numéntum,



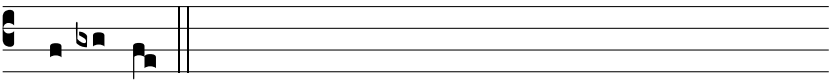
volvéntes lá-pi-dem ad ósti-um mo-numénti; * Ponéntes mí-



li-tes, qui custo-dí-rent illum. ∷. Accedéntes prínci-pes sa-



cerdó-tum ad Pi-lá-tum, pe-ti- é-runt il-lum. * Ponéntes.



∷ Se-púl-to.