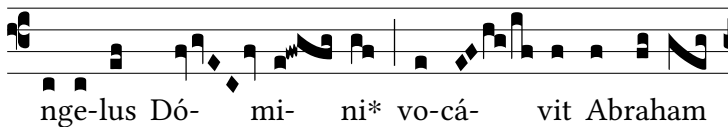
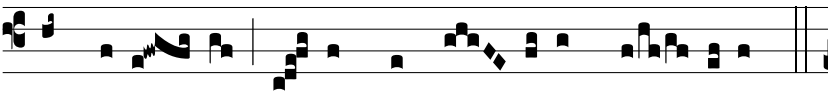


Resp.  
2.

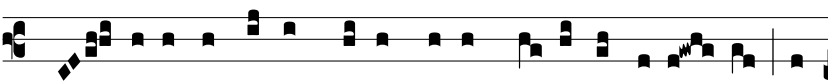
**A**



di-cens: † Ne extén-das ma-num tu-am su-



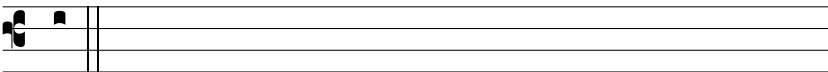
per pu-e-rum, e-o quod tí-me-as Dó-minum.



*Ψ* Cumque extendísset manum ut immo-lá-ret fí-li-um, ec-



ce Ange-lus Dómi-ni de cœ-lo cla-má-vit, di-cens.



† Ne