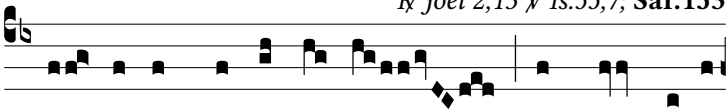
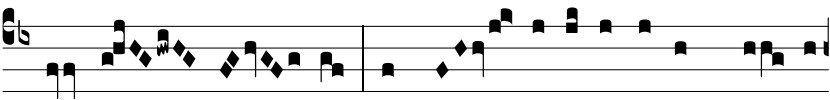


Resp.

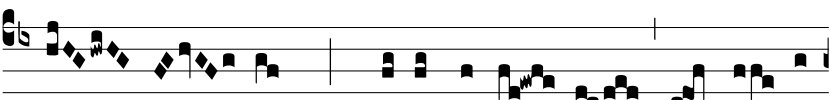
6.
S



cín- di- te* corda vestra, et non vesti-



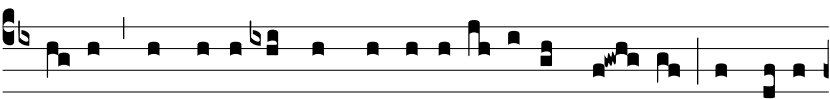
mén-ta ves- tra: et con- vertími-ni ad Dó- mi-



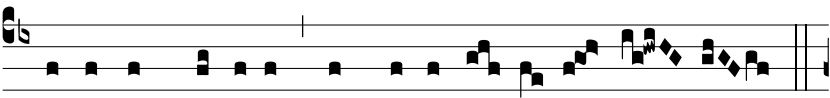
num De- um: † Qui- a be-ní- gnus et mi- sé-



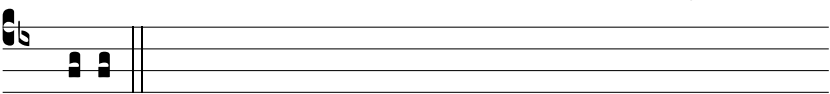
ri- cors est. √ De-re-línquat ímpi- us vi- am



su- am, et vir in-íquus co-gi-ta-ti- ónes su- as, et rever-



tá-tur ad Dóminum, et mi-se-ré- bi-tur e- jus.



† Qui- a.