

Grad.
3.

E



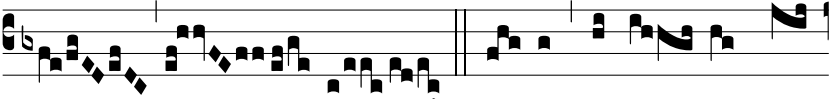
XSÚRGE * Dó- mi-ne,



fer o- pem no- bis: et lí-



be- ra nos propter no- men



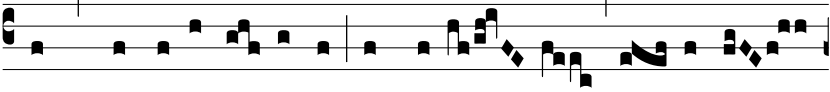
tu- um. Ψ . De- us, áu-ri- bus nos-



tris au- dí- vi- mus: patres nos-



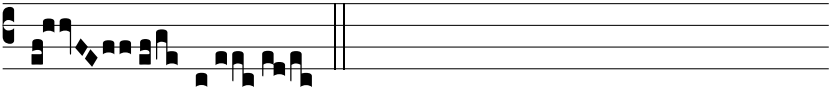
tri annun-ti- avé- runt no- bis o-



pus, quod ope-rá- tus es in di- é- bus e- ó-rum,



in di- é- bus * an- tí-



quis.