

Ant.  
1 g2.



**H**

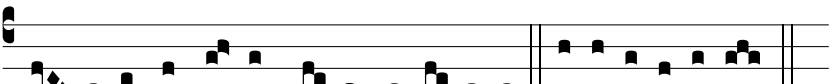
ó-di- e \* Chri- stus na- tus est, hó-di- e Salvá- tor



appá- ru- it; hó-di- e in terra canunt ánge- li, læ- tán- tur



archánge- li; hó-di- e exsúl- tent iusti di- céntes: Gló-



ri- a in excél- sis De- o, al- le- lú- ia. E u o u a e.