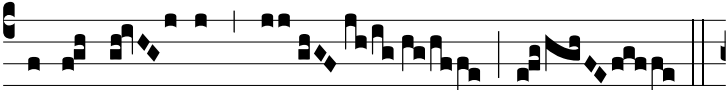


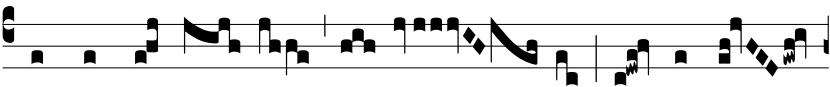
3.



A

LLE-LÚ- IA. * *ij.*

ψ.



In te Dó-mi- ne spe- rá- vi, non confún-



dar in ae- tér- num: in tu- a jus- tí- ti- a lí-



be-ra me, et é-ri-pe me: inclí- na ad me



au-rem tu- am, accé- le- ra * ut e-rí- pi- as



me.