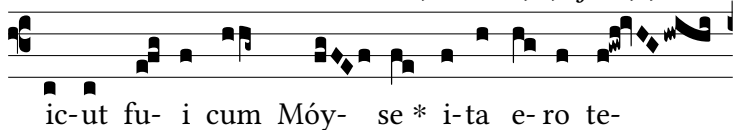


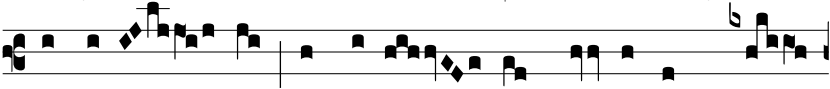
Resp.
2.
S



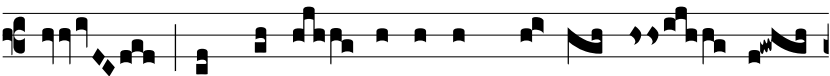
ic-ut fu- i cum Móy- se * i-ta e-ro te-



cum, di-cit Dómi- nus: † Confor-tá- re, et e-



sto robú- stus: introdú- ces pó- pu- lum me-



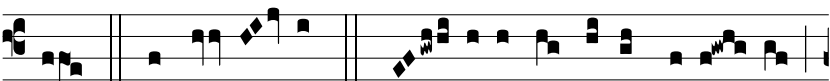
um ad terram- lacte et mel- le ma- nán-



tem. Ψ No- li timé-re, quó-ni- am te-cum sum: ad quæ-



cúmque perréxe-ris, non dimíttam te, ne- que re lín-



quam. † Confor-tá- re. Ψ Gló- ri- a Pa-tri, et Fí-li- o,



et Spi-rí- tu- i San-cto. † Confor-tá- re.