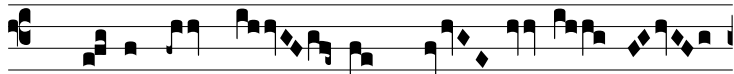


Resp.

2.

R

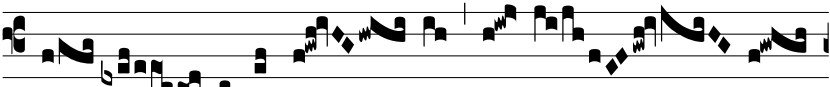
eplé- ti sunt* o- nes Spí- ri- tu San-



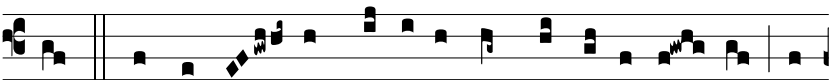
cto: et coepé- runt lo- qui, pro- ut Spí-ri- tus Sanc-



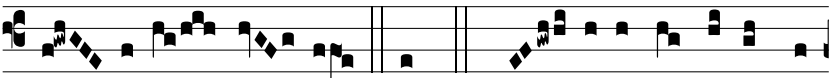
tus dabat é-loqui il- lis: † Et convé- nit multi-



tú- do- di- cénti- um, al- le- lú-



ja. V Loque- bân- tur va- ri- is linguis Apósto- li mag-



ná- li- a De- i. † Et. V Gló- ri- a Pa- tri, et Fí-



li- o, et Spi- rí- tu- i San- cto. † Et.