

Grad.  
2.

E



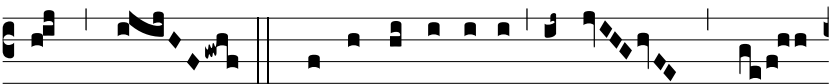
X- ci- ta, \* Dó- mi- ne, po- tén- ti- am



tu- am, et ve- ni,



ut sal- vos fá- ci- as nos.



Ψ. Qui re- gis Isra- el, intén-



de: qui dedú- cis ve- lut



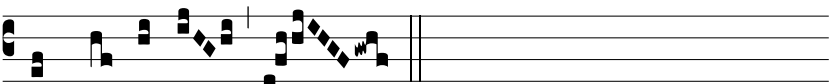
ovem Jo- seph: qui se- des



super Ché- ru- bim, ap- pá- re co- ram



Ephra- im, Bénjamin, \*



et Ma- násse.