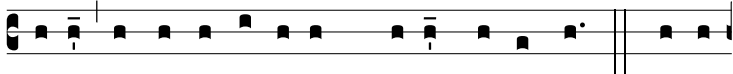


ψ.

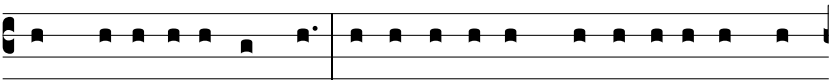


D

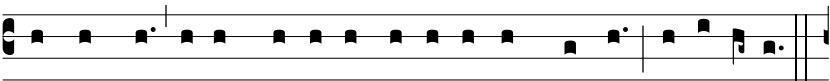
E-us in adju-tó-ri-um me-um inténde. R̄. Dómi-



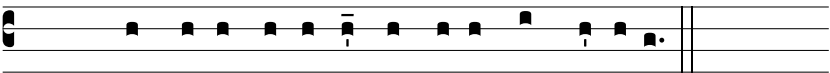
ne ad adjuvándum me festí-na. Gló-ri-a Patri, et Fí-li-o,



et Spi-rí-tu-i Sancto. Sic-ut e-rat in princí-pi-o, et nunc,



et semper, et in saécu-la saecu-ló-rum. Amen. Alle-lú-ia.



*Vel*: Laus ti-bi Dómi-ne Rex aetérnae gló-ri-ae.