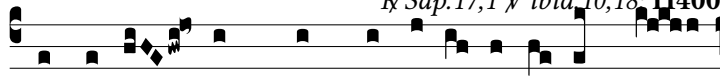


Resp.
3.



Magna e- nim* sunt ju- dí- ci- a tu- a, Dó-



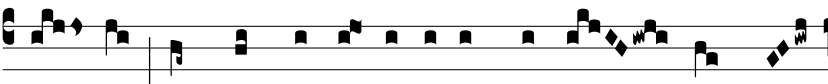
mi- ne, et in-enarra-bí- li- a ver- ba tu- a:



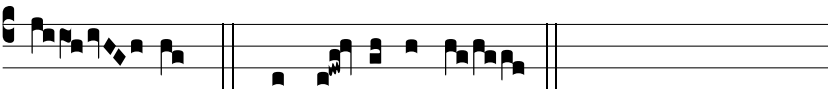
† Magni- fi- cá- sti pó- pu- lum tu- um et ho-



no- rá- sti ¶ Transtu- lí- sti il- los per ma- re



Ru- brum et transve- xí- sti e- os per a quam ní-



mi- am. † Magni- fi- cá- sti.