

**T**



ECUM princi-pi- um \* in di- e



vir-tú- tis tu- ae: in splendó- ri-



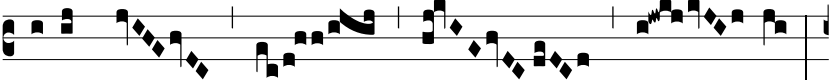
bus sanctó- rum, ex ú- te- ro an-te



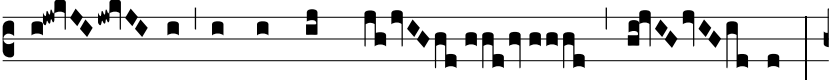
lu-cí- fe-rum gé- nu- i



te.  $\Psi$ . Di-xit Dóminus Dó-



mino me- o:



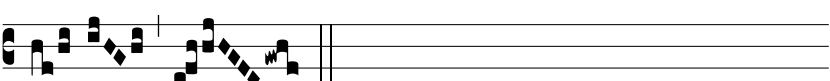
Se- de a dextris me- is:



do-nec po- nam i-ni-mí- cos tu- os



sca- bél- lum pe- dum \* tu-



ó- rum.