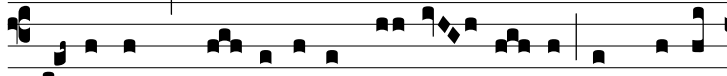
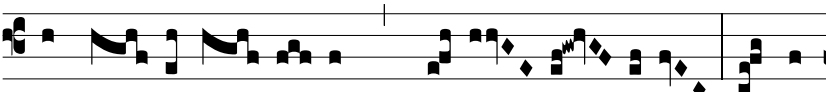


Intr.
2.

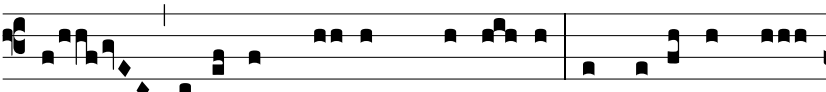
D



DOMINUS * for-ti-túdo ple-bis su-ae, et pro-téc-



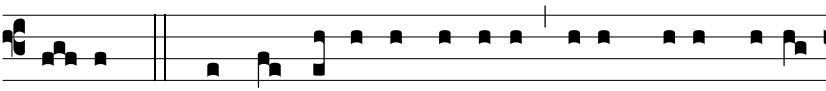
tor sa-lu-tá-ri-um Chri-sti su-i est: sal-vum



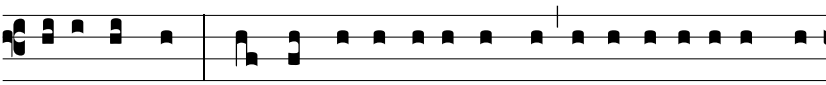
fac pópu-lum tu-um, Dómi-ne, et béne-dic he-



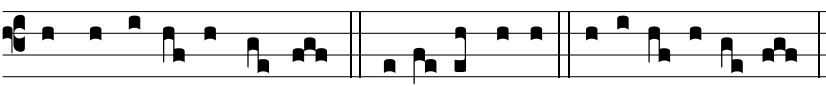
re-di-tá-ti tu-ae, et rege e-os usque in saé-



cu-lum. *Ps.* Ad te Dómi-ne clamábo, De-us me-us ne sí-



le-as a me: * nequando tá-ce-as a me, et assimi-lábor de-



scendénti-bus in la-cum. Gló-ri-a Patri E u o u a e